

Syllabus

Open e-course

# Agroforestry 101: Enhancing Livelihoods and Ecosystem Resilience



## Topic

Agroforestry is increasingly recognized as a critical strategy for strengthening climate change resilience and improving local community livelihoods. Agroforestry has the potential to maximize environmental, economic and social benefits. It has also been widely used as a successful approach to sustainable land use management. Agroforestry practitioners must understand the fundamental principles of agroforestry and how to collaborate with local farmers and other relevant stakeholders in the design of agroforestry systems in order to reap the benefits. This is the focus of the e-course.

## Learning objectives

Upon completing the course, participants will be able to:

- Identify the characteristics of agroforestry and the functions of its components.
- Recognize the different and interrelated factors that affect the success of agroforestry interventions.
- Promote agroforestry as a sustainable forestry and agriculture practice that provides a range of environmental, economic, and social benefits.

## Structure

The course is self-paced and takes about eight hours to complete including the workbook.

---

Sessions	Content
Introduction	
Session 1: What is agroforestry?	This session introduces learners to the fundamental aspects of agroforestry. It discusses the components of agroforestry, the characteristics and functions of trees, crops and livestock, and showcases examples of agroforestry systems, including intercropping

---

---

Session 2: Benefits of agroforestry	This session highlights the environmental, economic and social benefits of agroforestry. Topics covered include its role in enhancing food security and livelihoods, boosting community resilience to climate change, and supporting the protection and rejuvenation of natural resources.
Session 3: Enabling conditions for agroforestry	This session delves into the essential conditions required for the successful development and adoption of agroforestry systems. These prerequisites encompass policy changes, enhancing farmers' skills, ensuring seedling availability, and establishing incentives and market connections.
Session 4: Stakeholder engagement in agroforestry	This session emphasizes the significance of involving diverse stakeholders in shaping the agroforestry landscape. It further explores how to address and harmonize their varied interests.
Session 5: Designing agroforestry interventions	<p>This session outlines the principles and guidelines for designing agroforestry interventions. While it doesn't detail the selection of tree species and crops, it offers practical considerations to keep in mind when designing agroforestry systems.</p> <p>As this is the last session, it also includes parting notes and activities to mark the end of the course.</p>

---

## Competency tag

Integrated landscape management; sustainable forest management; community forest enterprises

## Grading policy

A certificate is available upon completion of the course if you pass the assessments. The course uses two types of assessment:

- Auto-graded assessments give immediate feedback. They are included in Sessions 1, 3, 4 and 5. Session 2 does not contain an auto-graded assessment. Participants must achieve an aggregate score of 75 percent or more to pass the auto-graded assessment.
- A workbook is an offline assignment. Participants are required to email their completed workbook to [app.elearning@recoftc.org](mailto:app.elearning@recoftc.org). The workbook is assessed using this rubric: 0 (Insufficient), 1 (Needs work), 2 (Satisfactory) and 3 (Excellent). Participants must score at least a 2 to pass the workbook assessment.



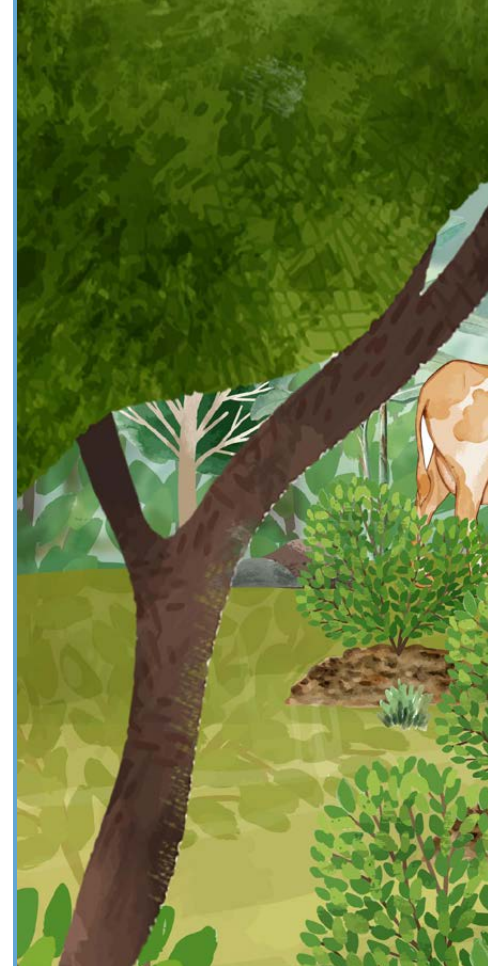
At RECOFTC, we believe in a world where resilient communities with respected rights thrive in forest landscapes that they manage sustainably and equitably. We take a long-term, landscape-based and inclusive approach to supporting local communities to secure their land and resource rights, stop deforestation, find alternative livelihoods and foster gender equality. With more than 36 years of experience working with people and forests, we have built trusting relationships with partners at all levels, from multilateral institutions and governments to local communities and the private sector. Our innovations, knowledge and initiatives are enabling countries to improve forest governance, mitigate and adapt to climate change and achieve the UN Global Goals.

#### RECOFTC

P.O. Box 1111  
Kasetsart Post Office  
Bangkok 10903, Thailand  
T +66 (0)2 940 5700  
F +66 (0)2 561 4880  
info@recoftc.org



[recoftc.org](http://recoftc.org)



#### Our sponsors



Schweizerische Eidgenossenschaft  
Confédération suisse  
Confederazione Svizzera  
Confederaziun svizra

Swiss Agency for Development  
and Cooperation SDC



Sweden  
Sverige

RECOFTC's work is made possible with the support of the Swiss Agency for Development and Cooperation (SDC) and the Swedish International Development Cooperation Agency (Sida).