

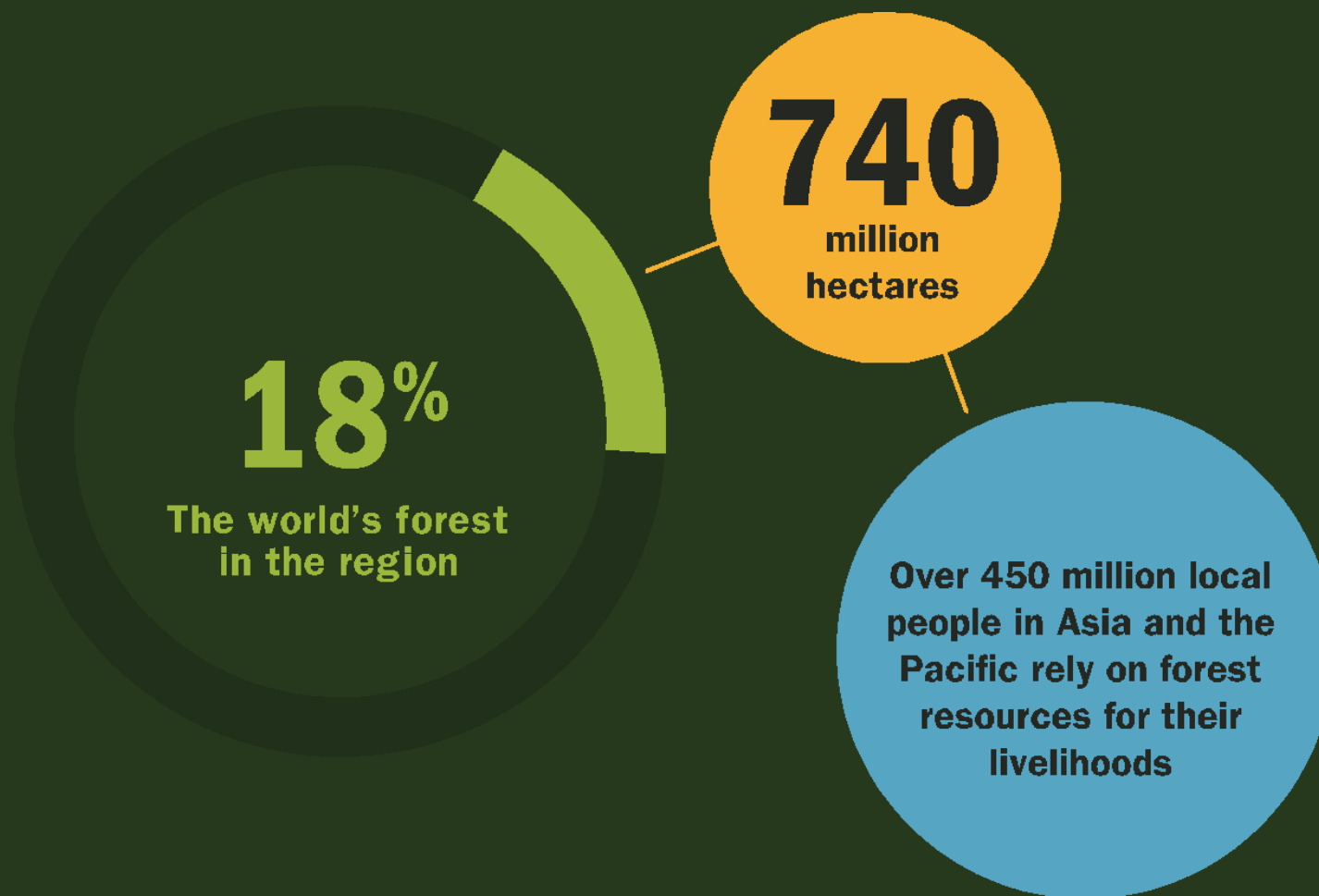


# Role of citizen's monitoring in CF Management

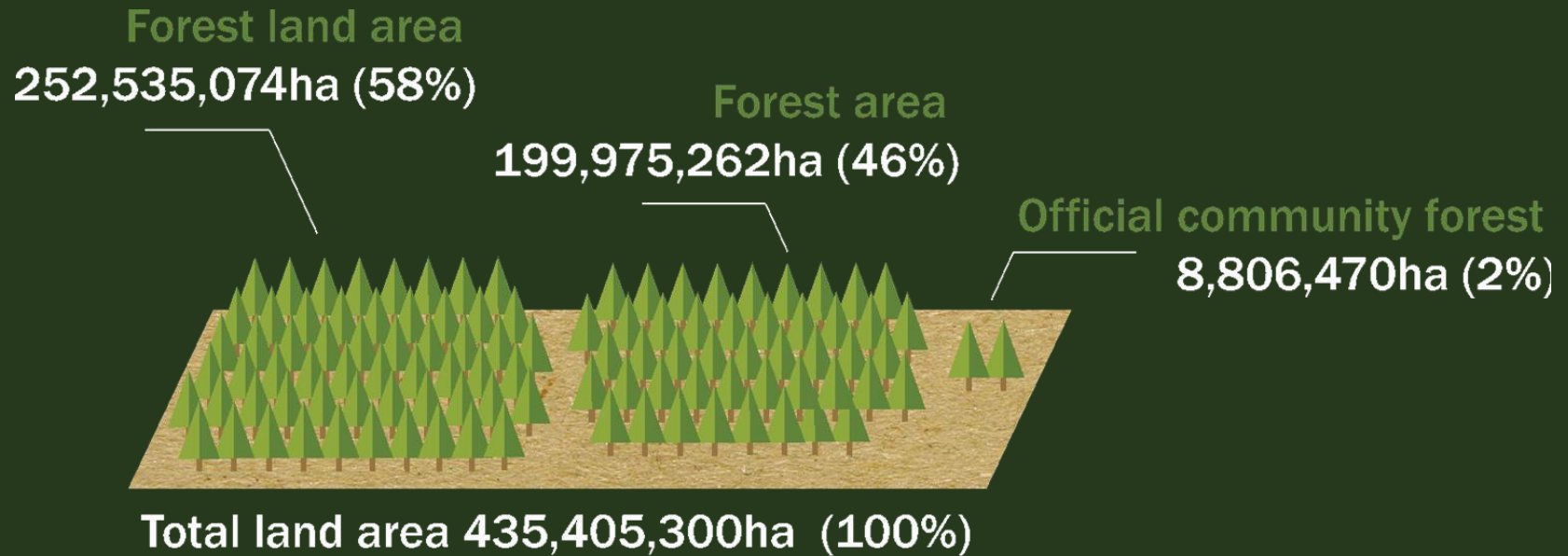
**RECOFTC – The Center for People and Forests**

**23 April 2018**

## FOREST IN ASIA AND THE PACIFIC



# COMMUNITY FORESTRY IN ASEAN



(RECOFTC 2014)

## CURRENT COMMUNITY FOREST: STATUS V TARGETS

Country	Area covered by Official Agreements		Target Area	Target Period	% Achieved in 2013
	ha	% forest land	ha		
Cambodia	183,725	1.80%	2 million	2010 - 2029	9%
Indonesia	143,065	0.11%	2.5 million	2011 - 2016	5%
Lao PDR	Not available	Not available	n/a	n/a	n/a
Malaysia	Not available	Not available	n/a	n/a	n/a
Myanmar	42,148	0.13%	919,000	2001 – 2030/31	4%
Philippines	4,128,212	26.12%	9 million	1997 - 2008	45%
Thailand	500,000	2.23%	n/a	n/a	n/a
Vietnam	3,809,320	25.08%	4 million	2006 - 2020	95%
<b>Sum</b>	<b>8,806,470</b>	<b>3.50%</b>	<b>15,919,000</b>	-	<b>69%</b>

(from RECOFTC 2014)

# Citizen's monitoring and reporting

- Different from traditional approaches
- Actively engages key actors in setting objectives and indicators, and assessing outcomes
- Driven by local stakeholders
- Designed to provide more targeted and appropriate benefits to local communities

## WHY COMMUNITY FORESTRY?

Putting local people at the heart of forest decision-making and management, community forestry can make sustainable forest management a reality.

Community forestry is a solution for people and forests :

- improving livelihoods
- reducing deforestation
- good governance



# Benefits of citizen monitoring

- Cost effective
- Realistic and contextualized indicators
- Information access to local communities
- Realistic assessment of local changes, trends and resource availability
- Data ownership and intellectual property rights
- Recognition of local knowledge

# Challenges of citizen monitoring

- Capacity and resources with local stakeholders to collect and synthesize information
- Reliability and accuracy of data
- Lack of recognition by officials
- Monitoring and evaluation is a continuous process



# CF and global challenges

- Role of CF in climate change mitigation and adaptation
- Role of CF in local livelihoods
- Role of CF in meeting Sustainable Development Goals (SDGs)
- Role of CF in community empowerment and grassroots governance

**Communities will be an ally in sustainable forest management and economic development if they can benefit from their efforts**



**If the forest pays the forest stays!**

Thank you  
[www.recoftc.org](http://www.recoftc.org)



Local people hold the key to healthy forests